



THE VENUS MANUFACTURING WORLD OF VISUAL COMMUNICATIONS EDUCATIONAL PRODUCTS

In 1965 Venus produced their first chalkboards. Back then the boards were mostly black and made of slate, melamine or cement board. As time passed green and brown boards became the rage and since then Venus Manufacturing has grown with the times and the industry. Designing their own trims and complementary products and accessories. They were the first in their local market to offer the now popular white markerboards and to import cork for their bulletin boards.

Venus, with over \$ 70,000,000 of installed product has grown large enough to provide a range of quality products and competitive pricing, Venus is also known for it's ability to react swiftly and responsively to the needs of their ever-growing clientele with timely products and rapid delivery. The best components available are utilized in the manufacturing of products and their suppliers are the best in the business. Polyvision, Alliance Wall, Forbo Industries, Clartage, Koroseal Vinyls and Draper Screens have been supporting Venus Manufacturing in it's quest to produce quality products for over 35 years. With plans to remain at the forefront of modern technology, Venus produces their own aluminum trim systems with raw materials purchased directly from the extruders. Always open and aware of changes in the marketplace, Venus constantly reviews and searches for new and innovative products to offer their customers.

TABLE OF CONTENTS

Marker Boards.....	3
Chalkboards.....	4
Graphic Boards.....	5
Vinyl Bulletin Boards.....	6
Tackable Wall Panels.....	7
Writing Walls.....	8
Designer Fabric Bulletin Boards.....	9
Natural Cork Bulletin Boards.....	10
Processed Cork Bulletin Boards.....	11
Horizontal Sliding Boards.....	12
Bulletin Board Cabinets.....	13
Executive Conference Cabinets.....	14
Trophy and Display Cases.....	15
Rollaround Boards.....	16
Accessories.....	17
Audio Visual Projection Screens.....	18
Message and Directory Boards.....	19

MARKER BOARDS

Deluxe porcelain on steel marker boards have become the standard in visual education throughout the world, not only in schools, but also in offices, industry and virtually anywhere visual teaching is important. They may also be utilized as a magnetic board as well.

This product has a 50-year, life-of-the-building, "lifetime" guarantee of the writing surface. The surface will accept just about any writing medium but overwhelming use is "dry-wipe" markers which go on easily and come off readily with almost no dust. The surface can also be used as a projection screen.

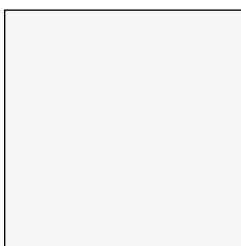
- **PROJECTION SCREEN**
- **WATER SOLUBLE MARKER**
- **SEMI-PERMANENT MARKER**
- **PERMANENT MARKER (Remove with solvent)**
- **WILL ACCEPT MAGNETS**
- **DRY MARKER (Wipe with eraser)**
- **AVAILABLE IN ALL COLORS SHOWN**
- **50 YEAR WRITTEN GUARANTEE!!**

- *Low gloss, High gloss or Matte surfaces*
- *Extra heavy gauge aluminum frame*
- *Full length rounded chalk tray*
- *Full length map rail with cork insert*
- *Mounting hardware included*
- *Easy to erase and clean*
- *Non-staining*
- *Colorfast and UV resistant*
- *Accepts magnetic aids*
- *Sharp contrast for easy viewing*

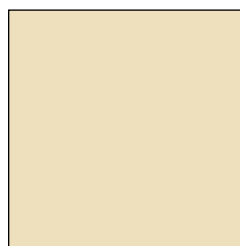
This high-gloss markerboard with the "lifetime guarantee" has been the writing surface of choice for over 30 years. Unlike melamine, ceramicsteel surfaces will not leave behind the "ghost writing" of past presentations. Available in these 4 colors:



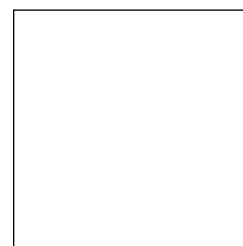
401 Silver Screen Gray



402 White



403 Beige



5250 Brilliant White

OAK FRAME

CATALOG NUMBER	SIZE - HEIGHT X WIDTH
OAKM3648	3' X 4'
OAKM3660	3' X 5'
OAKM4836	4' X 3'
OAKM4848	4' X 4'
OAKM4860	4' X 5'
OAKM4872	4' X 6'
OAKM4120	4' X 10'
OAKM4144	4' X 12'
OAKM4190	4' X 16'

ALUMINUM FRAME

CATALOG NUMBER	SIZE - HEIGHT X WIDTH
MKBD3648	3' X 4'
MKBD3660	3' X 5'
MKBD4836	4' X 3'
MKBD4848	4' X 4'
MKBD4860	4' X 5'
MKBD4872	4' X 6'
MKBD4120	4' X 10'
MKBD4144	4' X 12'
MKBD4190	4' X 16'



CHALK BOARDS

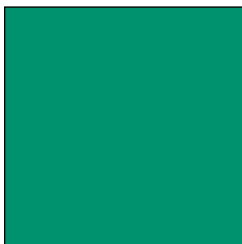
The porcelain steel chalkboards are manufactured with the same high quality material as our markerboards. The only difference is that our chalkboards utilize a matte finish, which is slightly rougher to give the surface more “tooth” to capture the chalk. These are the most durable chalkboards available today! The porcelain steel magnetic surface carries our famous 50 year manufacturers warranty and comes in a variety of colors, the most common of which are the #802 Green, or #809 Black.

The board accepts magnetic aids and comes framed in natural oak or satin anodized aluminum as well as our foil back or sheet back unframed models. Standard features include full length chalk tray and complete mounting hardware

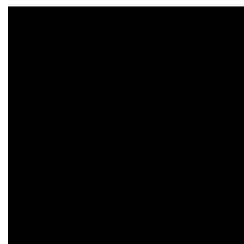


- EASY WRITING AND ERASING WITH CONVENTIONAL CHALK
- MAGNETIC SURFACE
- WOOD TRIM ALSO AVAILABLE
- LIFETIME PERFORMANCE WARRANTY
- MULTIPLE COLORS
- STANDS UP TO ABUSE & CONSTANT USE
- NO GLARE
- FIRE, STAIN AND SCRATCH RESISTANT

This ceramic-on-steel chalkboard with the “lifetime guarantee” stands up beautifully to abuse and constant use, eliminating the “ghost writing” problems associated with one coat enamel boards. Available in these 4 colors:



802 Green



809 Black



808 Brown



2069 Blue Green

OAK FRAME

CATALOG NUMBER	SIZE - HEIGHT X WIDTH
OAKC3648	3' X 4'
OAKC3660	3' X 5'
OAKC4836	4' X 3'
OAKC4848	4' X 4'
OAKC4860	4' X 5'
OAKC4872	4' X 6'
OAKC4120	4' X 10'
OAKC4144	4' X 12'
OAKC4192	4' X 16'

ALUMINUM FRAME

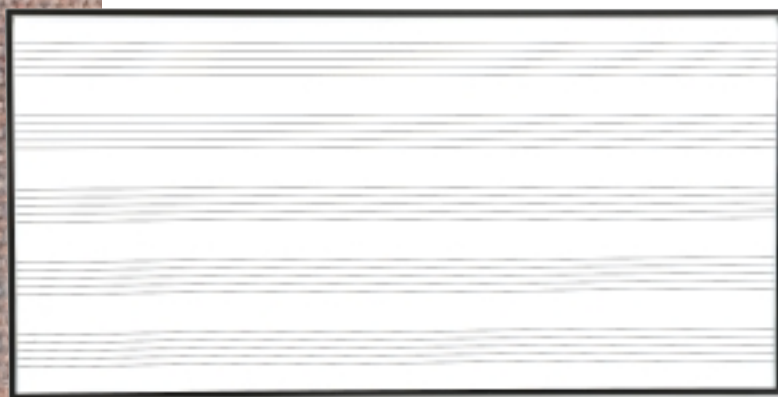
CATALOG NUMBER	SIZE - HEIGHT X WIDTH
CKBD3648	3' X 4'
CKBD3660	3' X 5'
CKBD4836	4' X 3'
CKBD4848	4' X 4'
CKBD4860	4' X 5'
CKBD4872	4' X 6'
CKBD4120	4' X 10'
CKBD4144	4' X 12'
CKBD4192	4' X 16'



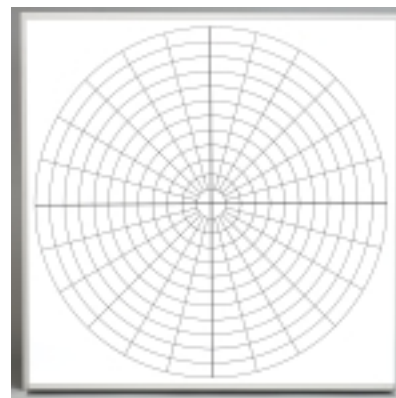
GRAPHICS BOARDS

Educators have come to rely on Venus Manufacturing's outstanding selection of lines and graphics markerboards as the perfect teaching aid. All graphics are permanently fused with the porcelain steel surface of the Venus Manufacturing markerboards making them as indestructible as they are functional. Wear and scratch resistant, these boards offer UV resistant lines, sharp contrast and a lifetime warranty. Ideal for conference or board room, offices, hospitals, and of course, the classroom or training facility.

The boards accept magnets, are offered in markerboard or chalkboard, and available with many stock graphic images as well as custom images making them suitable for almost any application.

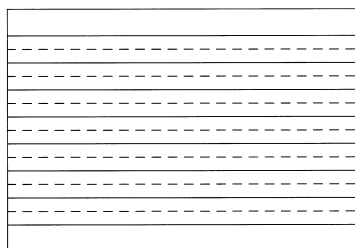


MUSIC STAFF LINES

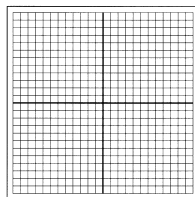


POLAR COORDINATES

CUSTOM
GRAPHICS



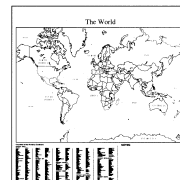
PENMANSHIP LINES



GRAPHIC
COORDINATES



U.S.A.
MAP



WORLD
MAP

MARKERBOARD	CHALKBOARD	DESCRIPTION	SIZE - H X W
MB404GC	CH404GC	Graph Coordinates	4' X 4'
MB404PC	CH404PC	Polar Coordinates	4' X 4'
MB404UM	CH404UM	U.S.A. Map	4' X 4'
MB404WM	CH404WM	World Map	4' X 4'
MB406MS	CH406MS	Music Staff Lines	4' X 6'
MB406PL	CH406PL	Penmanship Lines	4' X 6'
MB408MS	CH408MS	Music Staff Lines	4' X 8'
MB408PL	CH408PL	Penmanship Lines	4' X 8'
MB408GL		Grid Lines	4' X 8'
MB408HL		Horizontal Lines	4' X 8'
MB410MS		Music Staff Lines	4' X 10'
MB410PL		Penmanship Lines	4' X 10'



VINYL BULLETIN BOARDS

Tough and durable, Venus vinyl bulletin boards are easy to clean, self healing and flame resistant. The boards come in a wide variety of colors. Crayon, glue and other soiled areas are washable with detergent and water. The boards are factory trimmed with anodized aluminum or oak frames. The textures available on the vinyl surface diminishes the visibility of pin holes and the non-fading properties of these boards will keep them useful and attractive for many years.

- *Also available edge-wrapped with no frame*
- *Meets federal specification CCC-W-408K*
- *Additional sizes are available*



Beige



Feather Down



Frosty



Gray Feather



Misty Gray



Off White



Opal



Pelican



Salt Water



Sugar Pink



White Cap

OAK FRAME

CATALOG NUMBER	SIZE - HEIGHT X WIDTH
WFB4824	4' X 2'
WFB4848	4' X 4'
WFB4872	4' X 6'
WFB4896	4' X 8'
WFB4120	4' X 10'
WFB4144	4' X 12'

ALUMINUM FRAME

CATALOG NUMBER	SIZE - HEIGHT X WIDTH
VBB4824	4' X 2'
VBB4848	4' X 4'
VBB4872	4' X 6'
VBB4896	4' X 8'
VBB4120	4' X 10'
VBB4144	4' X 12'



TACKABLE WALL PANELS

Tackable wall panels allow ordinary walls to become teaching and communication centers. They are designed to maximize total wall space, from floor to ceiling, and are typically 4 feet wide and up to 12 feet high. Various trims are available and the bottom is often covered with flooring cove base. Vinyl is machine laminated to a lightweight wood fiber panel one half inch thick and is wrapped around the long edges. Panels can be cut square or beveled upon request.

Decidedly custom in appearance, these wall panels yield outstanding acoustical control qualities and are both lightweight and durable. Easy to install they can add a design flair to virtually any application from classroom and gymnasium to restaurants and offices. This stylish product will fit perfectly into any decor and comes in a variety of colors.



PANEL SIZE H X W

4' X 8'
4' X 9'
4' X 10'
4' X 12'

BELAIR COLLECTION

Off White
Beige
Opal
Saltwater
Platinum

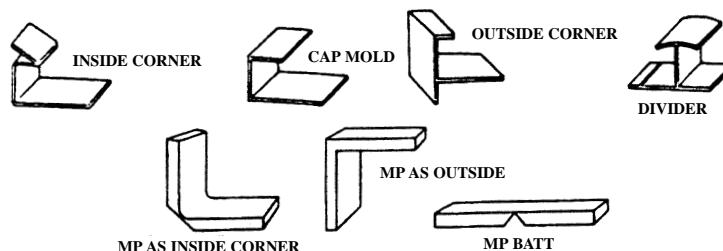
HARBORWEAVE COLLECTION

Gray Feather
Frosty
Feather Down
Sugar Pink
Pelican

LINEN COLLECTION

Dover
Stockton
Winthrop
Porcelain
Jade Mist

MATCHING MOULDINGS

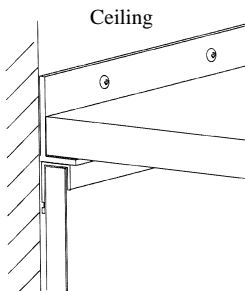
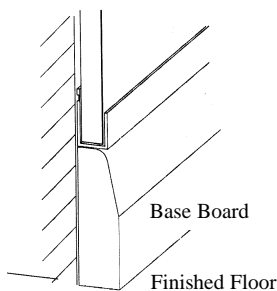
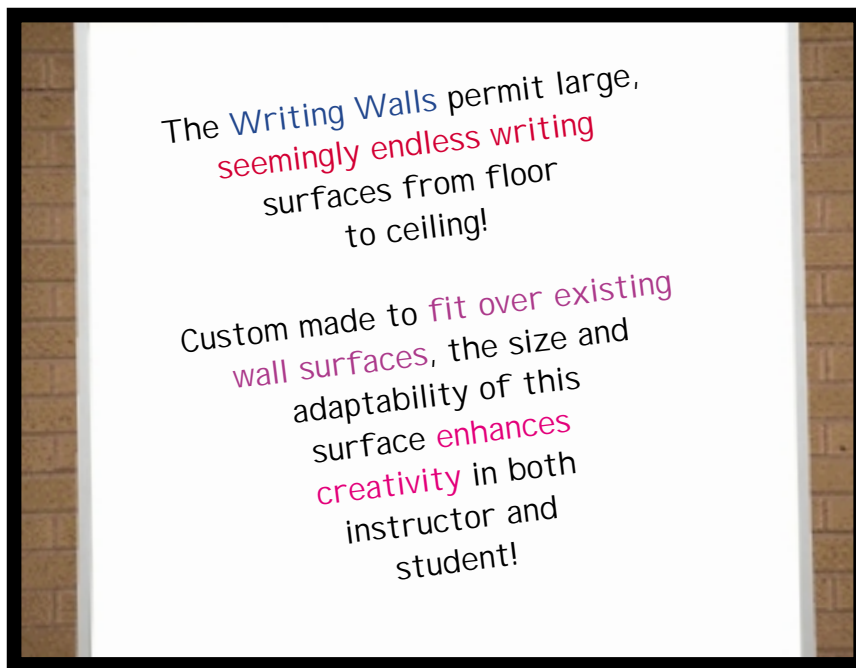


MOULDINGS	SATIN ALUMINUM	VINYL WRAPPED	PLASTIC
J moulding (cap)	SAJM	VWJM	WPJM
Inside Corner	SAIC	VWIC	WPIC
Divider	SADH	VWDH	WPDH
Outside Corner	SAOC	VWOC	WPOC
MP Batt		VWMP	WPMP

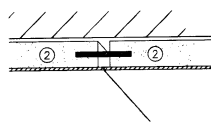


WRITING WALLS

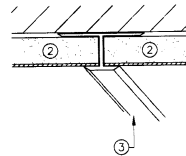
The writing is on the walls! All the features and benefits of our markerboards are included when we install porcelain steel marker panels floor-to-ceiling. In four foot widths (five foot on special order) the straight edges between boards have a powder coated divider bar or an optional spline joint can be used. the sides and the top are finished with a distinctive aluminum trim that conceals screws and joints. Panels are available in any height up to twelve feet. Backing is half inch thick particle board (or insulation board) which gives added insulation value to the wall. White is most often specified although other colors or even chalkboard can be used. A small magnetic eraser tray (2 feet) can be placed anywhere to hold marking pens, chalk or erasers.



OPTIONAL SPLIKE JOINT

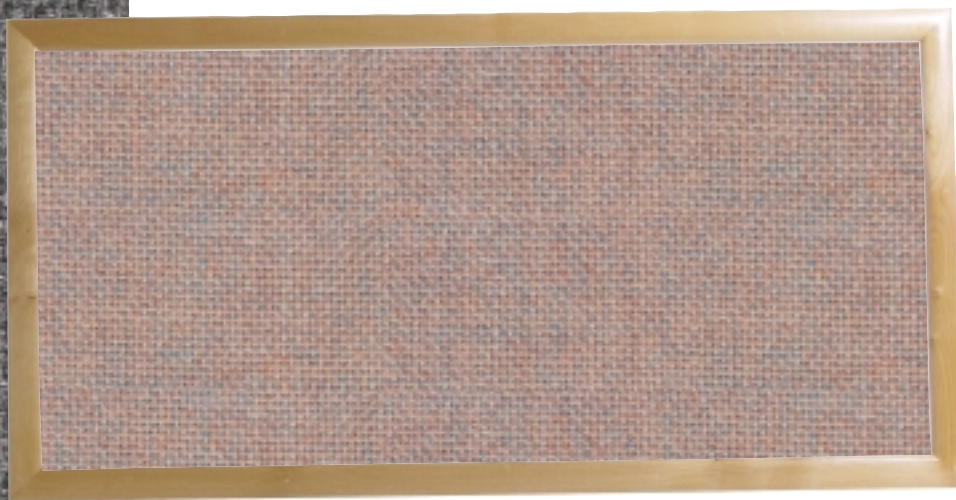


STANDARD H BAR

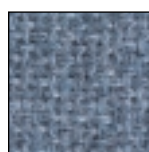


DESIGNER FABRIC BULLETIN BOARDS

These tackable fabric boards offer beautiful design aesthetics and are tough, with long term durability. The fabric is completely washable and unaffected by most chemicals and other cleaning agents. Made with 100% polyester wall and panel fabrics these boards are ASTM-E 84 flame tunnel tested with a class "A" rating. Both soil and stain resistant the boards come in 12 stock colors and are available special order in 48 Guilford of Maine fabric colors.



Boards may be framed in aluminum or oak or may be ordered with all four edges fabric wrapped



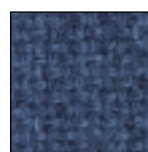
Blue



Burgundy



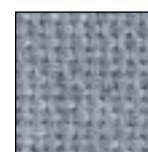
Camel



Dk. Blue



Dk. Gray



Gray



Sand



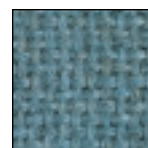
White



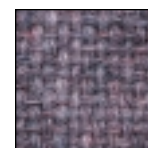
Rose



Orange



Teal



Purple

ALUMINUM FRAME

CATALOG NUMBER	SIZE - HEIGHT X WIDTH
ADS3648	3' X 4'
ADS4848	4' X 4'
ADS4872	4' X 6'
ADS4896	4' X 8'
ADS4120	4' X 10'
ADS4144	4' X 12'

OAK FRAME

CATALOG NUMBER	SIZE - HEIGHT X WIDTH
WDB3648	3' X 4'
WDB4848	4' X 4'
WDB4872	4' X 6'
WDB4896	4' X 8'
WDB4120	4' X 10'
WDB4144	4' X 12'

EDGE WRAPPED

CATALOG NUMBER	SIZE - HEIGHT X WIDTH
EWD4848	4' X 4'
EWD4872	4' X 6'
EWD4108	4' X 9'
EWD4144	4' X 12'



NATURAL CORK BULLETIN BOARDS

Wherever a bulletin board is needed, Venus has premium quality, pure grain, natural cork surfaces that are ideal for use by schools, industry, offices and institutions. Smooth and resilient surfaces remain soft and pliable indefinitely. Pins and thumbtacks can be inserted easily and are gripped firmly by the self healing natural cork. The high quality natural cork surface is laminated to rigid board to enhance its durability and the boards are shipped complete with all hanging hardware.



OAK FRAME

CATALOG NUMBER	SIZE - HEIGHT X WIDTH
WNC1824	1.5' X 2'
WNC2436	2' X 3'
WNC3648	3' X 4'
WNC4848	4' X 4'
WNC4872	4' X 6'
WNC4896	4' X 8'
WNC4120	4' X 10'
WNC4144	4' X 12'
WNC4196	4' X 16'

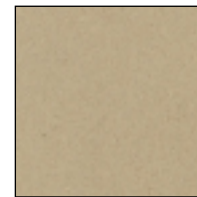
ALUMINUM FRAME

CATALOG NUMBER	SIZE - HEIGHT X WIDTH
ANC1824	1.5' X 2'
ANC2436	2' X 3'
ANC3648	3' X 4'
ANC4848	4' X 4'
ANC4872	4' X 6'
ANC4896	4' X 8'
ANC4120	4' X 10'
ANC4144	4' X 12'
ANC4196	4' X 16'



PROCESSED CORK BULLETIN BOARDS

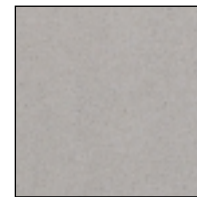
The ultimate durable, tackable, washable, communication surface. Made from pure natural ingredients that combine under heat and pressure to create a smooth, uniformly dense surface of unsurpassed beauty and durability. Available in twelve colors that go all the way through to the burlap backing. The Venus processed cork bulletin boards are soil resistant and have washable surfaces. The self healing surface enables tacks to insert easily and grip firmly. The surface resists cracking, peeling or scraping and is low light reflectant for ease of viewing. An environmentally friendly product, these processed cork bulletin boards naturally inhibit bacterial growth and is manufactured with no toxins so there are never any harmful emissions. Manufactured with toughness in mind they will stand up to repeated rough use year after year. Also available in large rolls to create floor to ceiling, wall to wall display surfaces.



2067



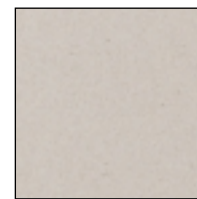
2185



2162



2166



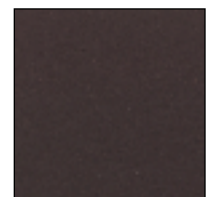
2182



2186



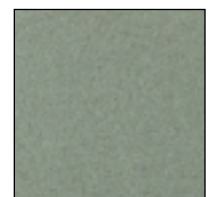
2187



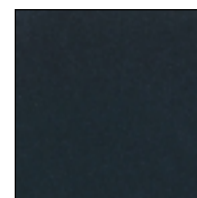
2202



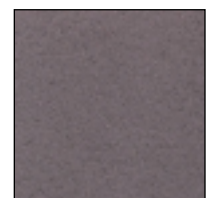
2201



2203



2205



2204

ALUMINUM FRAME

CATALOG NUMBER SIZE - H X W

ALP4848	4' X 4'
ALP4872	4' X 6'
ALP4896	4' X 8'
ALP4120	4' X 10'
ALP4144	4' X 12'
ALP4196	4' X 16'

OAK FRAME

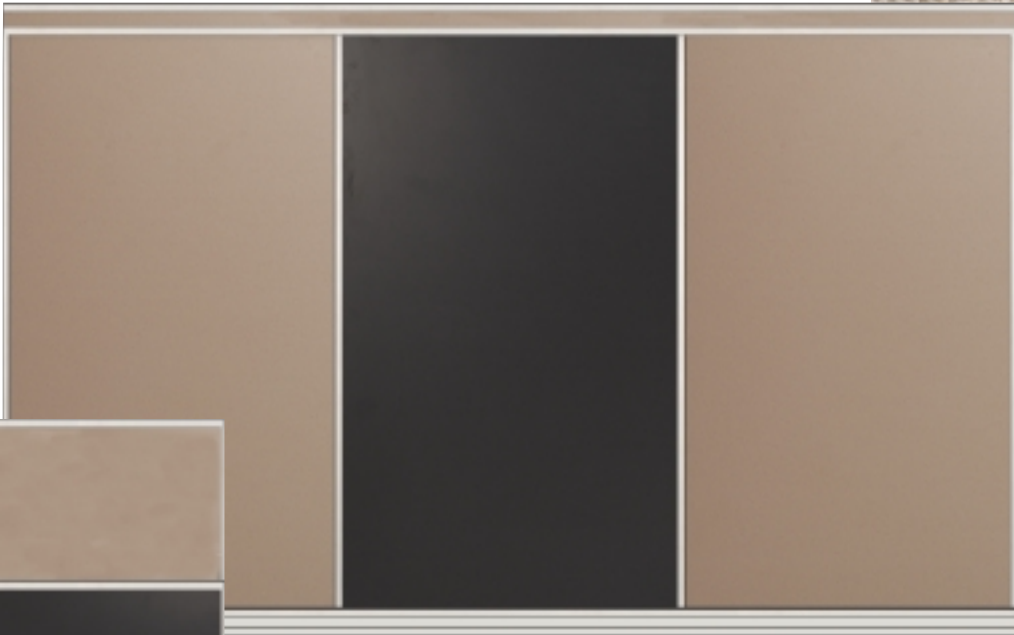
CATALOG NUMBER SIZE - H X W

WFP4848	4' X 4'
WFP4872	4' X 6'
WFP4896	4' X 8'
WFP4120	4' X 10'
WFP4144	4' X 12'
WFP4196	4' X 16'

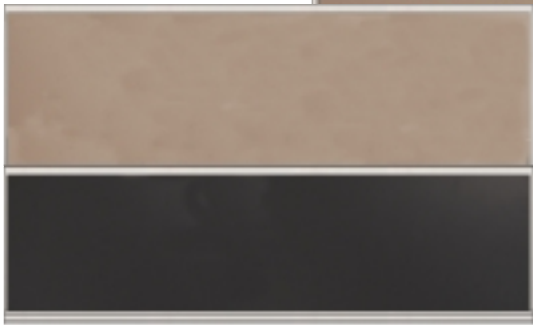


HORIZONTAL/VERTICAL SLIDING UNITS

With multiple sliding panels, the sliding units will double or triple your utilization of wall space. They feature a fixed back panel and individual sliding panels. The panels can be of markerboard, chalkboard, tackboard, or any combination of the three in any colors. They have a sturdy anodized aluminum main frame and each of the sliding panels are individually framed and have concealed heavy duty rollers to make movement easy. The number of sliding panels can be varied up to four, but the most popular unit has a fixed back with two sliders. A chalk tray runs the full width of the unit on the outside bottom of the frame and a maprail is incorporated on the top. These units may be surface mounted or set in recessed openings. The vertical units may incorporate honey-comb cores to reduce weight. The vertical units usually have 4 foot high panels making the total height 8 feet.

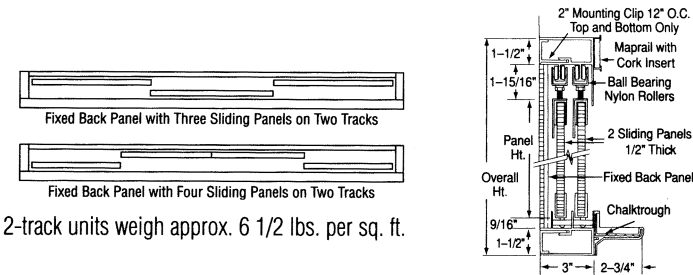


Horizontal Sliding Unit



Vertical Sliding Unit

HORIZONTAL SLIDING UNITS



2-track units weigh approx. 6 1/2 lbs. per sq. ft.

H X W	2 SLIDING PANELS	3 SLIDING PANELS	4 SLIDING PANELS
4' X 8'	4'		
4' X 12'	4', 6'	4'	4'
4' X 16'	8'	5'	4', 5'
4' X 20'		6'	6'
4' X 24'		8'	8'



ENCLOSED BULLETIN BOARD CABINETS

These attractive cases are constructed with sturdy 3" deep extruded satin anodized aluminum frames, or solid oak with a natural oak finish. Tempered safety glass or clear acrylic doors are fitted with concealed nylon rollers for quiet and smooth operation. Durable and tamper resistant lock is included. Standard series bulletin board includes natural cork, vinyl and burlap boards are also available. Lighted units and custom manufactured units are also available.



Options:

- Trim for recessed installation
- Black, Bronze or clear anodized frame
- Weather proofing for outdoor use
- Header panels
- Fluorescent lights



HINGED DOOR CABINET

CATALOG #	SIZE - H X W	# DOORS
HD11824	18" X 24"	1
HD13024	30" X 24"	1
HD13624	36" X 24"	1
HD13630	36" X 30"	1
HD23648	36" X 48"	2
HD23660	36" X 60"	2
HD24848	48" X 48"	2
HD24860	48" X 60"	2
HD34872	48" X 72"	3
HD34896	48" X 96"	3

SLIDING DOOR CABINETS

CATALOG #	SIZE - H X W	# DOORS
SD23636	36" X 36"	2
SD23648	36" X 48"	2
SD24848	48" x 48"	2
SD24860	48" x 60"	2
SD24872	48" x 72"	2
SD44896	48" x 96"	4
SD44812	48" x 144"	4

OAK ENCLOSED BULLETIN BOARDS

CATALOG #	SIZE - H X W	# DOORS
OAK23648	36" X 48"	2
OAK24848	48" x 48"	2
OAK24860	48" x 60"	2
OAK24872	48" x 72"	2



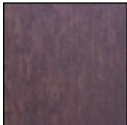
EXECUTIVE CONFERENCE UNITS

Executive conference units are perfect for lectures, training classes, or virtually any instructional environment. A wide array of customized features are available in order to address a multitude of individualized needs. Surfaces can be markerboard, chalkboard, or tackboard and options include flip charts, standard or oversized projection screens, plastic laminate exteriors, and cabinet locks. The frame is oak with a natural oak finish and a wide variety of other wood finishes are available. The back panel is porcelain markerboard and the inside door panels can be customized for any other tackable surface we offer. The units have full length brass finish piano hinges and mounts with concealed brackets. These efficeient and beautiful units are approximately four inches deep when closed.

WOOD FINISHES



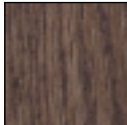
Walnut



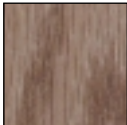
Mahogany



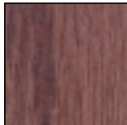
Natural Oak



Dark Oak



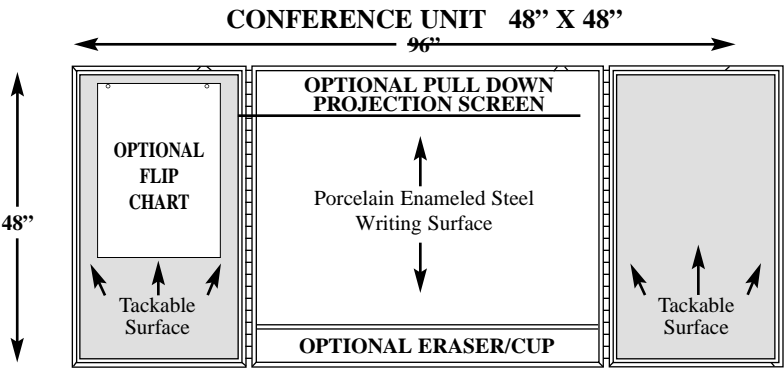
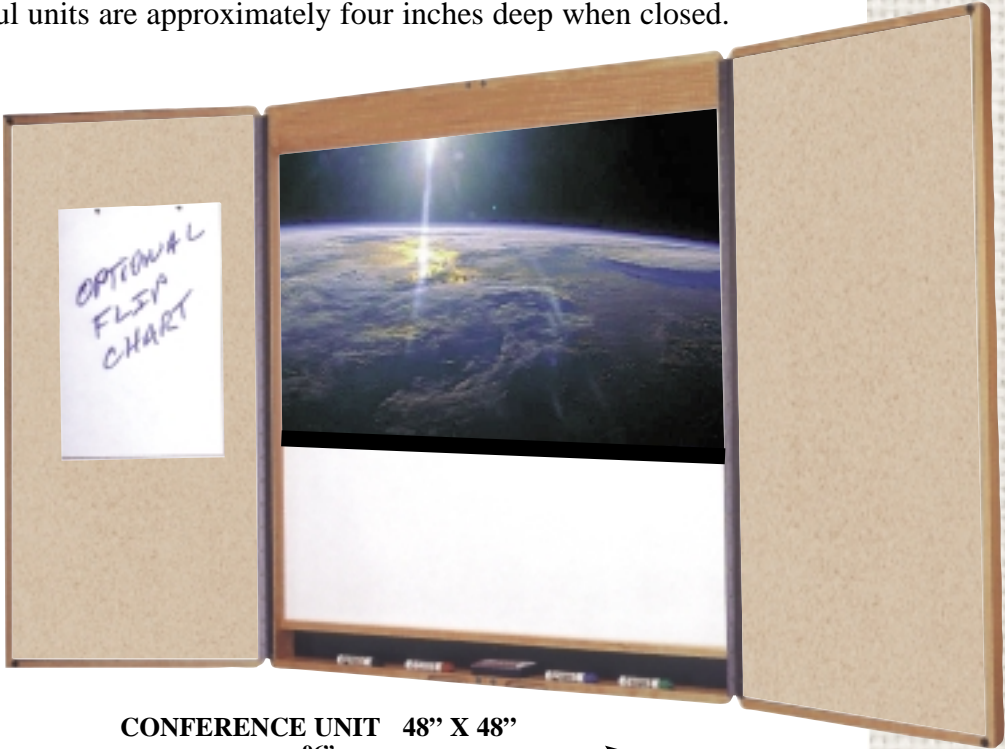
Medium Oak



Cherry Stain



Maple



CATALOG #	CLOSED SIZE H X W	OPEN SIZE H X W	# OF DOORS
VECU4830	48" X 30"	48" X 60"	1
VECU4848	48" X 48"	48" X 96"	2
VECU4860	48" X 60"	48" X 120"	2
VECU4872	48" X 72"	48" X 144"	2



TROPHY AND DISPLAY CASES

These attractive cases are constructed with sturdy heavy gauge aluminum frames with optional wood boxes. Tempered safety glass doors are fitted with lock and key. Back panels are your choice of our tackable materials; natural cork, processed cork, designer fabric, or vinyl tack panels. It has adjustable shelves; six, nine or twelve inches deep, with standards and brackets. The overall depth is sixteen inches with options for additional depth sizes. The units can be either surface mounted or recessed installed with or without the wood box. Options include: acrylic doors, fluorescent lights, bronze, black anodized or clear anodized frames or powdercoated frames



RECESS MODELS

CATALOG NUMBER	SIZE - H X W	# DOORS
RTC404	4' X 4'	1 PAIR
RTC406	4' X 6'	1 PAIR
RTC408	4' X 8'	2 PAIR
RTC410	4' X 10'	2 PAIR
RTC412	4' X 12'	3 PAIR

OPTIONAL WOOD BOX*

CATALOG NUMBER	SIZE - H X W	# DOORS
BOX404	4' X 4'	1 PAIR
BOX406	4' X 6'	1 PAIR
BOX408	4' X 8'	2 PAIR
BOX410	4' X 10'	2 PAIR
BOX412	4' X 12'	3 PAIR

** Used behind Recessed Units when walls are unfinished.*

SURFACE MOUNTED MODELS

CATALOG NUMBER	SIZE - H X W	# DOORS
SMC404	4' X 4'	1 PAIR
SMC406	4' X 6'	1 PAIR
SMC408	4' X 8'	2 PAIR
SMC410	4' X 10'	2 PAIR
SMC412	4' X 12'	3 PAIR



ROLL AROUND BOARDS

Mobility and efficiency is what our roll around boards are all about. These versatile boards can be set up in any location or moved around while a classroom or training session is ongoing. One or both sides of the board can be made of any of our board materials; markerboard, chalkboard or tackboard. Usable as a room divider, the board rolls quietly on four casters and there are two locking wheels available. A full length chalk tray at the bottom is an option. The durable welded steel frame will hold up over the years. The most popular setup is with white steel markerboard or processed cork tack board.



MAGNETIC TRAY

These solid aluminum trays can be used with any of our porcelain steel boards. Magnetic strips allow them to be positioned anywhere.

CATALOG#	LENGTH
MT12	12'
MT18	18'
MT24	24'

CATALOG NUMBER	SIZE - H X W
ROLL4260	42" X 60"
ROLL4848	48" X 48"
ROLL4872	48" X 72"
ROLL4896	48" X 96"

OVERALL HEIGHT IS 75"



ACCESSORIES

MAP AND DISPLAY RAIL

These map rails are constructed of heavy gauge extruded anodized aluminum with cork inserts for mounting on chalkboards, markerboards, or directly on your wall. Use to display student artwork or papers, hang maps, projection screens and display your maps. Available in lengths of 4', 6', 8', 12', and 16', and widths of 1", 2" or 3". Map rails are sold individually.



End Caps



Roller Bracket



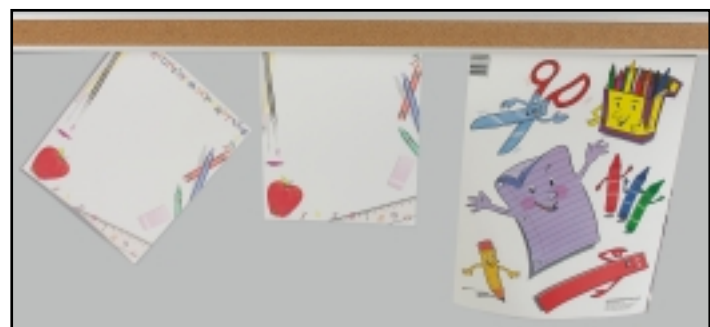
Flag Holder

ITEM	1"	2"	3"
4' Map Rail	MR104	MR204	MR304
6' Map Rail	MR106	MR206	MR306
8' Map Rail	MR108	MR208	MR308
12' Map Rail	MR112	MR212	MR312
16' Map Rail	MR116	MR216	MR316
End Caps	EC1	EC2	
Map Hooks	MH1	MH2	
Roller Brackets	RB1	RB2	
Flag Holder	FH1	FH2	

ART DISPLAY RAIL

The Venus art display rail combines the standard map and display rail with a special extrusion that holds posters, art, and drawings securely in place, without tacking. For easy removal simply pull up and out gently. Several colors of cork are available and it is compatible with the 2" map accessories.

CATALOG#	LENGTH
VADR2	2'
VADR4	4'
VADR6	6'
VADR8	8'



PROJECTION SCREENS

Manual and electric, we have 4 stock screen types to complete virtually all needs for projection screens in classroom, industrial, and office applications. Made from sturdy steel cases and with high quality spring roller or motor-in-roller electric systems, our projection screens are attractive, durable, and economical.

Star

Economy and Durability

Sturdy cylindrical steel case. Dove Gray, standard, white and black available.

SIZE - H x W CATALOG #

50" x 50"	209001
60" x 60"	209002
70" x 70"	209003
84" x 84"	209004

Luma

Highest quality spring roller screen for small to medium size groups

Offers beauty and dependability in the classroom or conference room. Pentagonal steel case is available in Dove Gray, standard, Black and White. Choose from fiberglass matt or glass beaded viewing surface

SIZE - H x W MATT WHITE GLASS BEADED

50" x 50"	207001	207015
60" x 60"	207002	207016
70" x 70"	207003	207017
84" x 84"	207004	207018
72" x 96"	207005	207019
96" x 96"	207006	207020

Luma 2

Heavy duty spring roller projection screen

An attractive and practical choice wherever a large spring-roller screen is required.

SIZE - H x W MATT WHITE GLASS BEADED

9' x 9'	206008	206034
8' x 10'	206009	206035
10' x 10'	206010	206036
9' x 12'	206011	206037
12' x 12'	206012	206038

Targa

Popular Motor-in-roller electric screen

Available in black, white or dove gray steel case.

SIZE - H x W MATT WHITE GLASS BEADED

50" x 50"	116001	116029
60" x 60"	116002	116030
70" x 70"	116003	116031
84" x 84"	116004	116032
8' x 8'	116006	116034
9' x 9'	116007	116036
10' x 10'	116008	116038
12' x 12'	116012	116040



**Call us for our complete
Projection Screen Catalog.**

"Photos Courtesy of Draper, Inc"



MESSAGE & DIRECTORY BOARDS

Attractive cases constructed of sturdy satin anodized aluminum framing gets your message out in style. The doors have full length piano hinges and safety glass. These units are equipped with tumbler locks.



**Also Available in
Bronze or Black Anodized
or with Oak Frames.*



CATALOG NUMBER	SIZE - H X W	# DOORS
DBC2418	24" X 18"	1
DBC3024	30" X 24"	1
DBC3624	36" X 24"	1
DBC3648	36" X 48"	2
DBC4848	48" X 48"	2
DBC4860	48" X 60"	2



VENUS



MANUFACTURING
COMPANY

707 East Curry Road • Tempe, Arizona 85281
Phone: 602-271-0501 • Fax: 480-967-0443